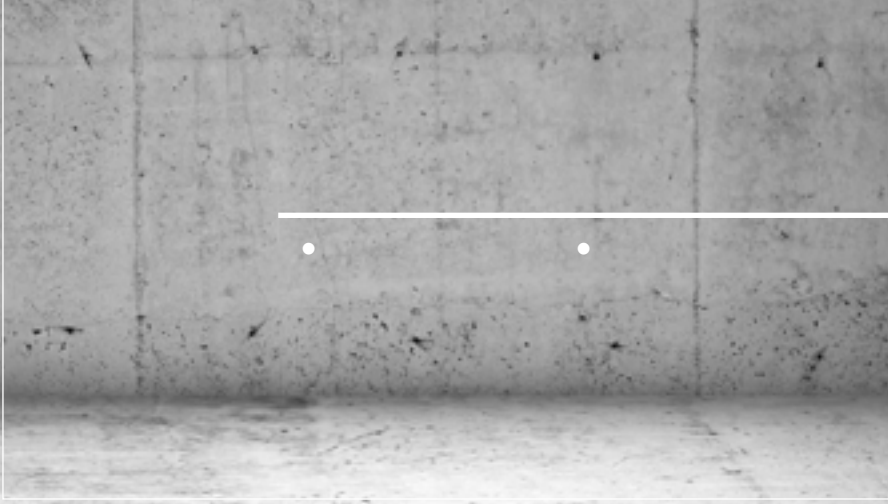
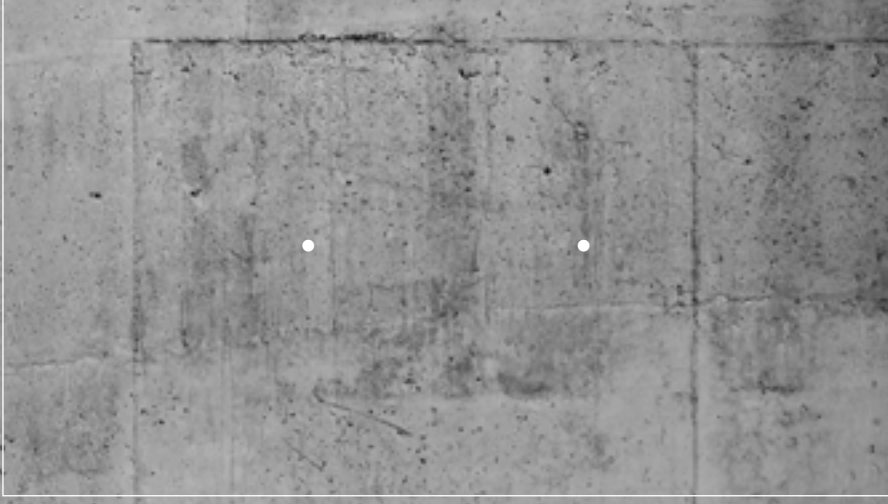
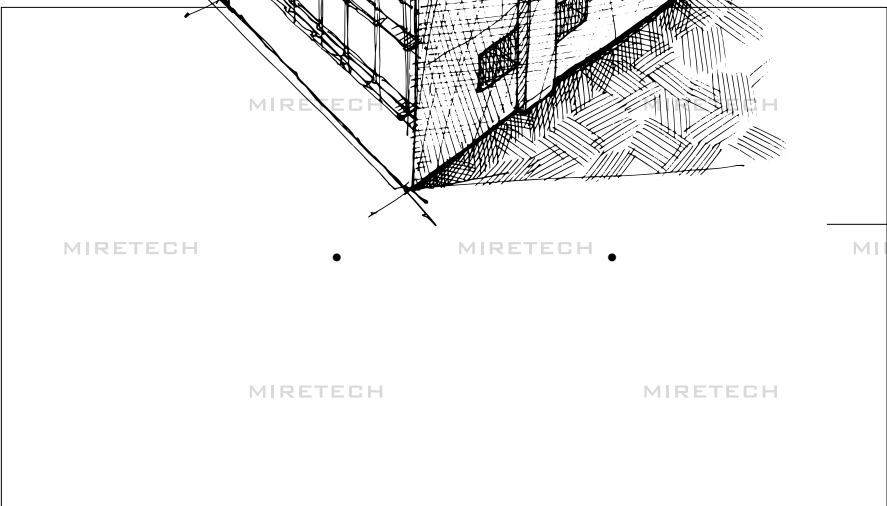
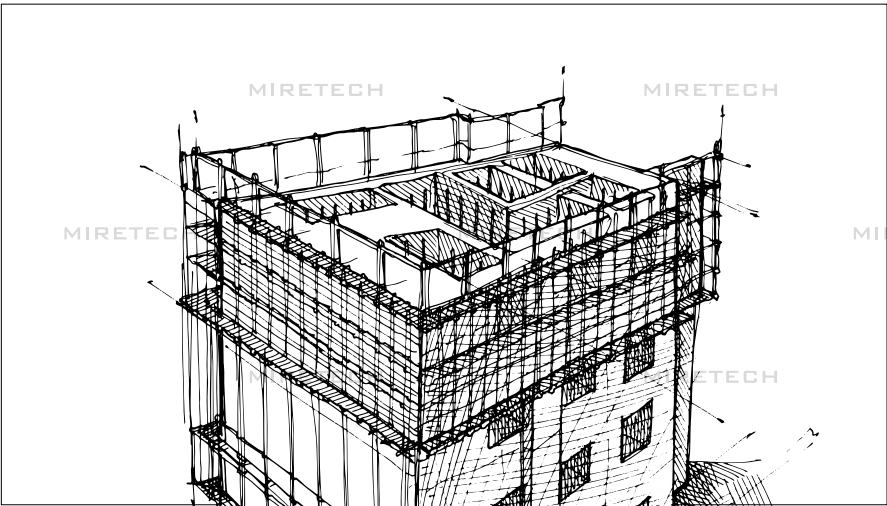
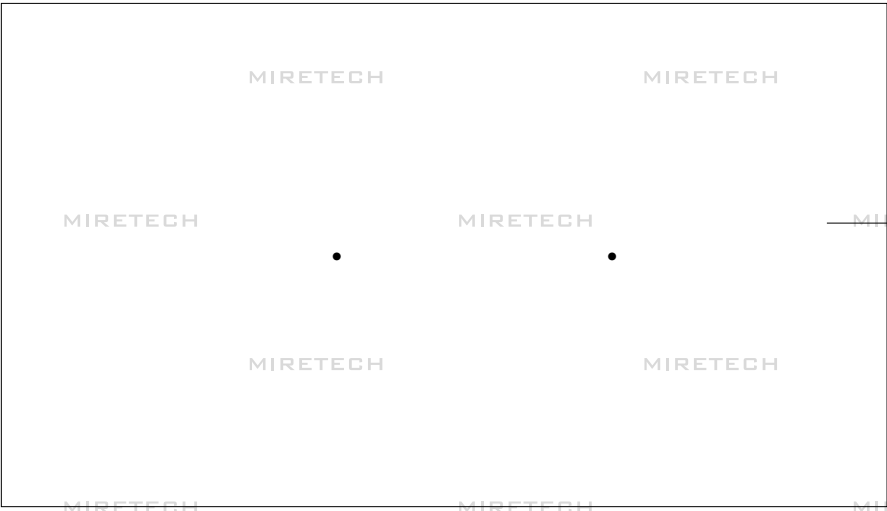
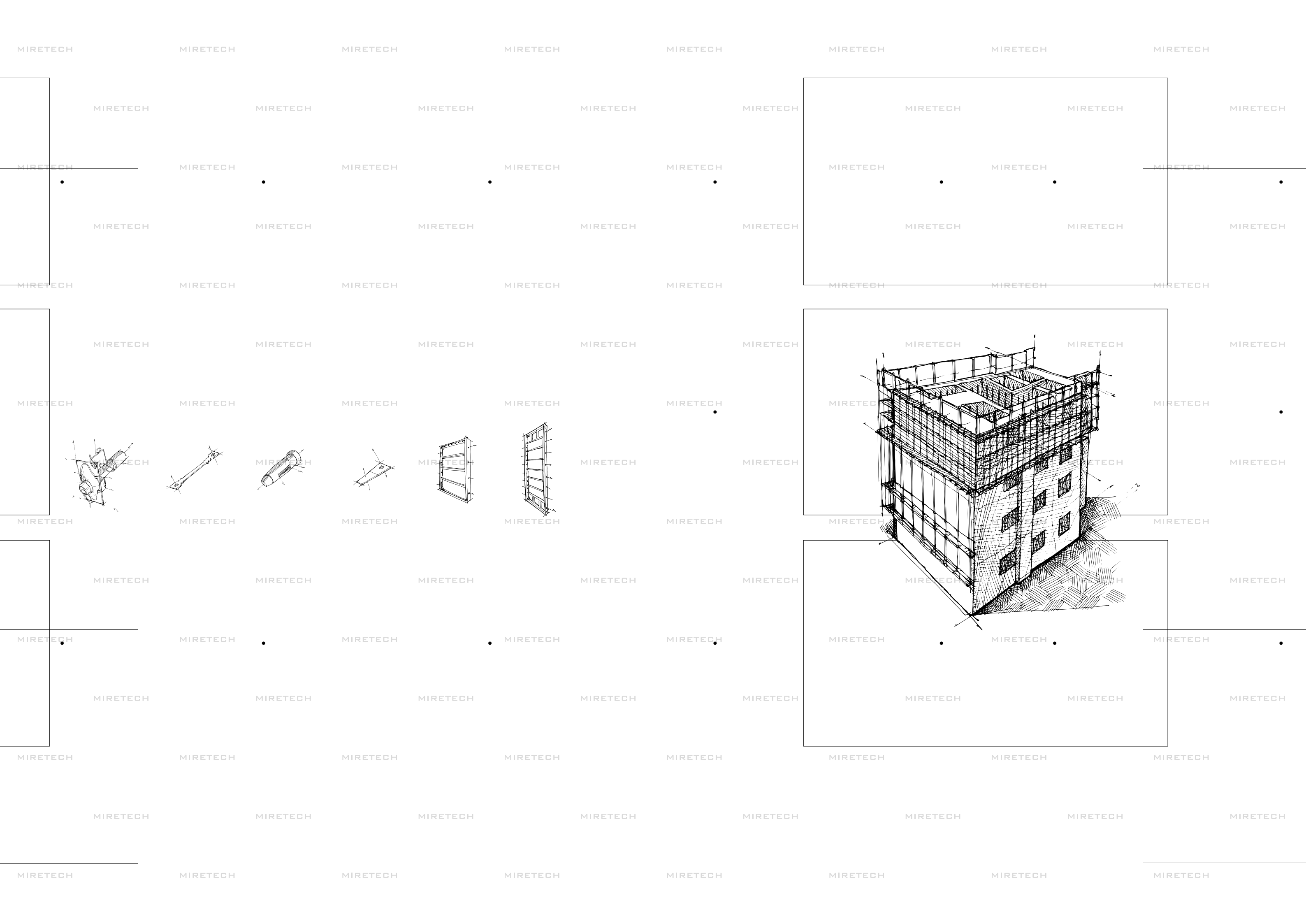


# MIRETECH FORMWORK









FORMWORK



If anyone can do it, then we would not even start.  
We would like to open a new era of formwork in Korea with the manufacturing and research technologies accumulated in the Form Tie System. Challenging what no one else can do is Miretech's spirit.



# MIRETECH creates technology that does not exist in the world

## START OF MIRETECH

If anyone can do it, then we would not even start.  
We would like to open a new era of formwork in Korea with the  
manufacturing and research technologies accumulated in the Form Tie  
System. Challenging what no one else can do is Miretech's spirit.

## MIRETECH, ENGINE OF GROWTH

People ask what is Miretech's engine of growth. Most people assume  
the Miretech's innovative technology is the engine of growth. Miretech's  
constantly strives for and researches new innovative technology. But, that  
is not the key to growth. The reason Miretech exists today is because it  
is a 'trusted' name. Since Miretech's inception in 1999, we have spent  
that time in building that name. In order to convey what we do are  
human skills, we strive to constantly meet, communicate, and empathize.  
The 'trusted' name that we earned is the core competency of today's  
Miretech.

## FROM INNOVATION TO CREATION

Miretech's way forward is to go beyond innovating what already exists and  
to create what does not exist. Korea is built utilizing Miretech's technology.  
Now, Miretech's technology is going global. We will achieve the future that  
we dreamt.



Busan Haeundae Marine City\_ Applying MIRETECH Formwork / Form Tie System(2006~2016)



MIRETECH

MIRETECH

MIRETECH

MIRETECH

MIRETECH

MIRETECH

MIRETECH

MIRETECH

ALUMINIUM FORM

MIRETECH

MIRETECH

MIRETECH

MIRETECH

MIRETECH

MIRETECH

MIRETECH

MIRETECH

MIRETECH

MIRETECH

MIRETECH

MIRETECH

MIRETECH

MIRETECH

MIRETECH

MIRETECH

MIRETECH

MIRETECH

MIRETECH

MIRETECH

MIRETECH

MIRETECH

MIRETECH

MIRETECH

MIRETECH

MIRETECH

MIRETECH

MIRETECH

MIRETECH

MIRETECH

MIRETECH

MIRETECH

MIRETECH

MIRETECH



MIRETECH

MIRETECH

MIRETECH



MIRETECH

MIRETECH

MIRETECH



MIRETECH

MIRETECH

MIRETECH

MIRETECH

MIRETECH

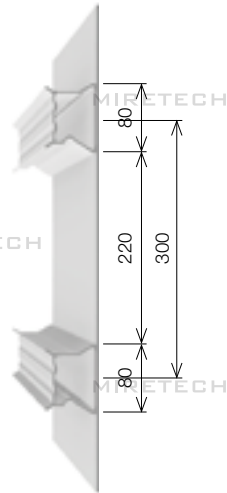
MIRETECH

MIRETECH

MIRETECH

MIRETECH

MIRETECH



MIRETECH

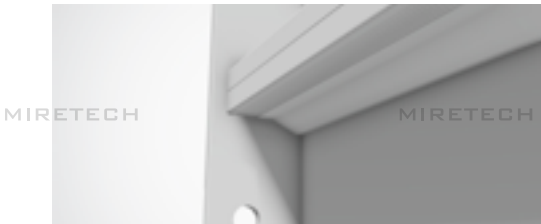
MIRETECH

MIRETECH



MIRETECH

MIRETECH



MIRETECH

MIRETECH

ABOUT PRODUCTS 6-7

MIRETECH

MIRETECH

MIRETECH

MIRETECH

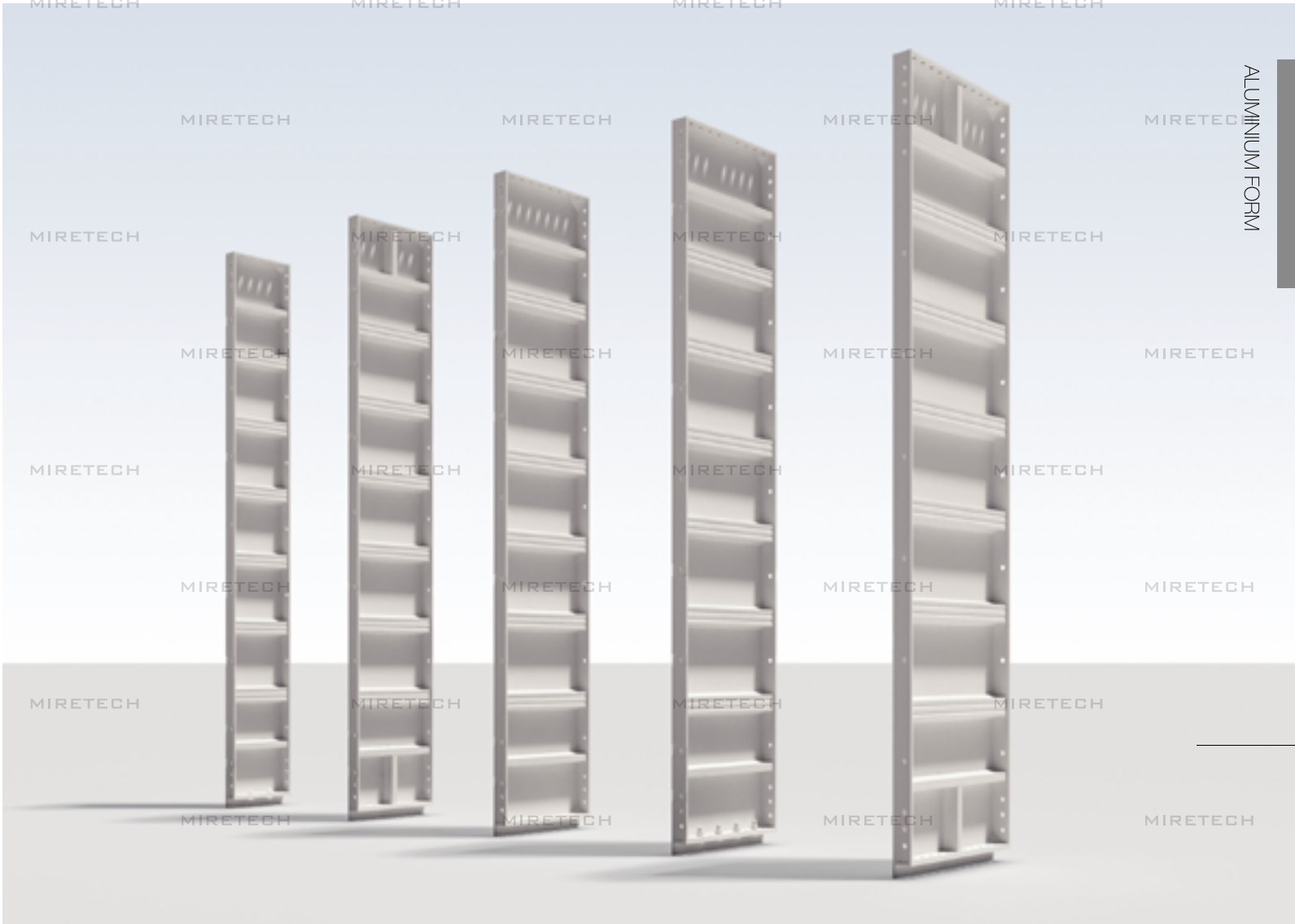
MIRETECH

MIRETECH

MIRETECH

MIRETECH

MIRETECH



MIRETECH

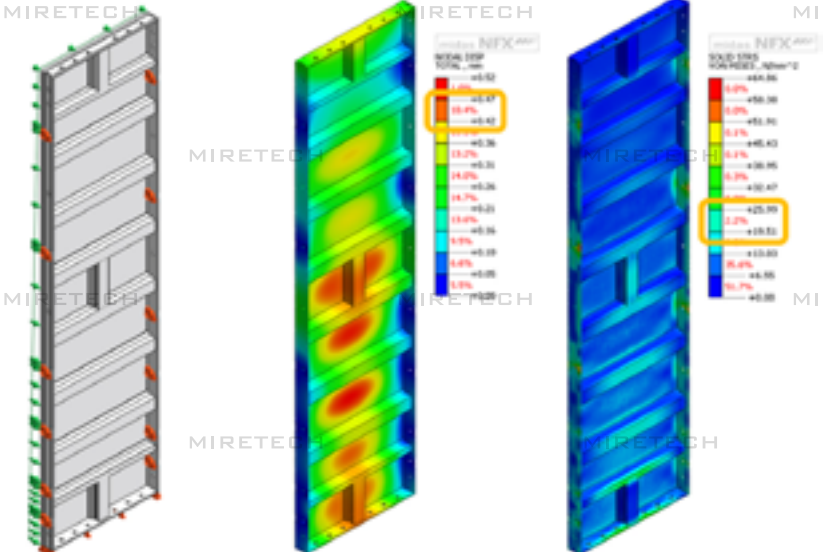
MIRETECH

MIRETECH

MIRETECH

Miretech sought to differentiate the Mico Panel from the beginning of its development. It is designed by considering productivity, construction efficiency, and quality based on issues of existing alform panel.

## MICO PANEL



MICO PANEL 응력분석 (타설축압 75KN)





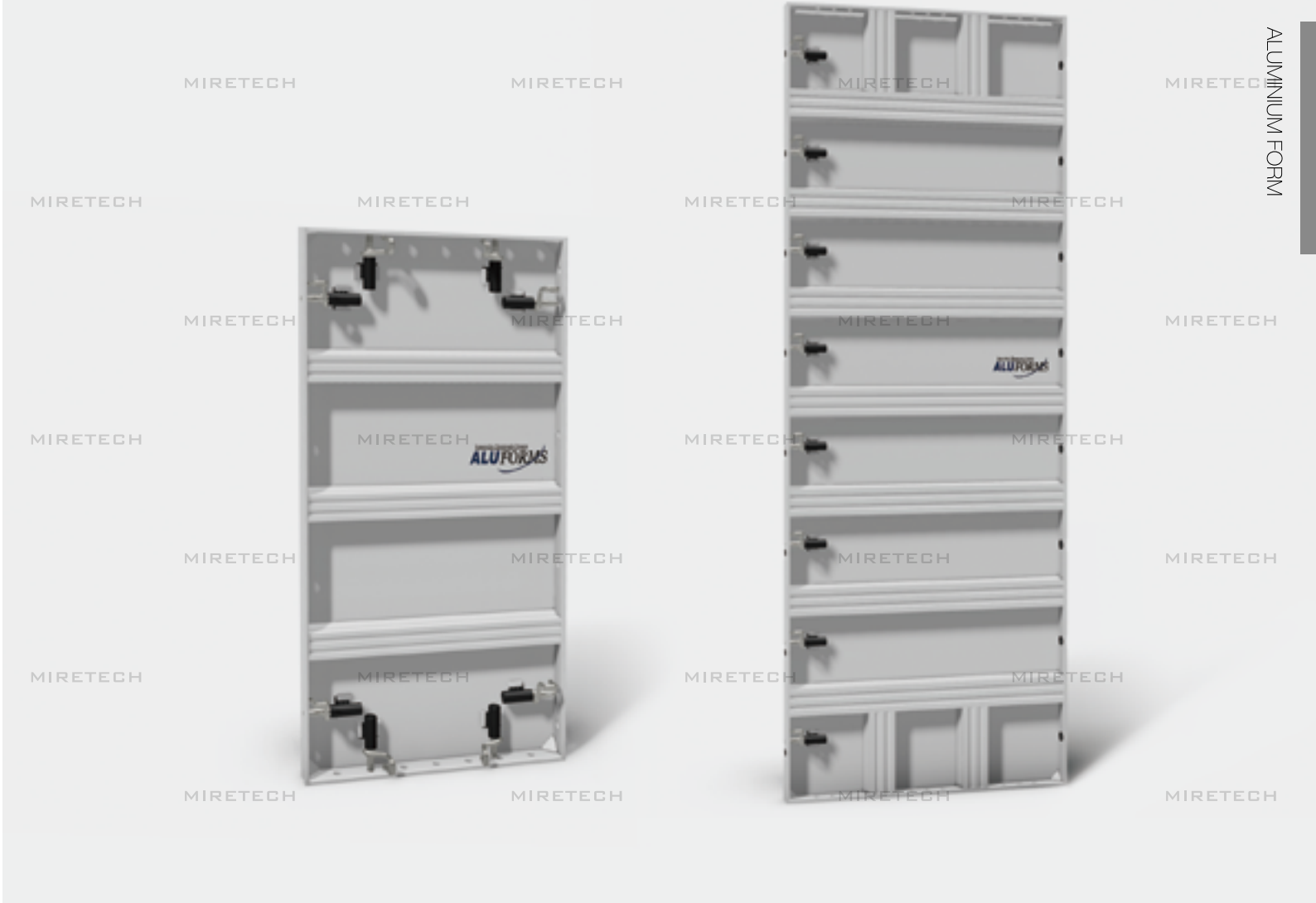
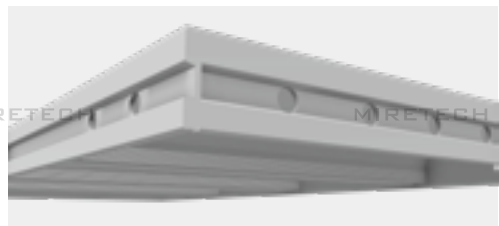
Aluforms Panel is the combination of the manufacturing technology of Miretech and the high technical skills and know-how of Aluforms Korea, our affiliate, for export to North and South American markets.

With all the advantages of Mico Panels, we drastically improved construction and work performance, by applying auto-pins and form clip, which are specialized accessories. In addition, to increase durability due to repetitive use, a high intensity bushing is attached to the pin-hole of the panel to panel durability.

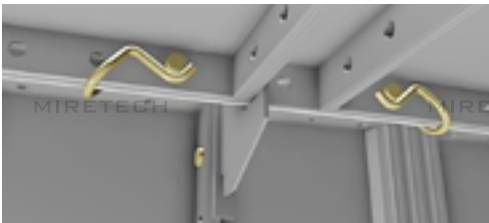


Unlike the existing aluminium panel manufactured using AA606 aluminium alloy, the use of AA5083 3.2T aluminium alloy as a skin plate significantly increases durability due to repetitive use and the quality of concrete surface.

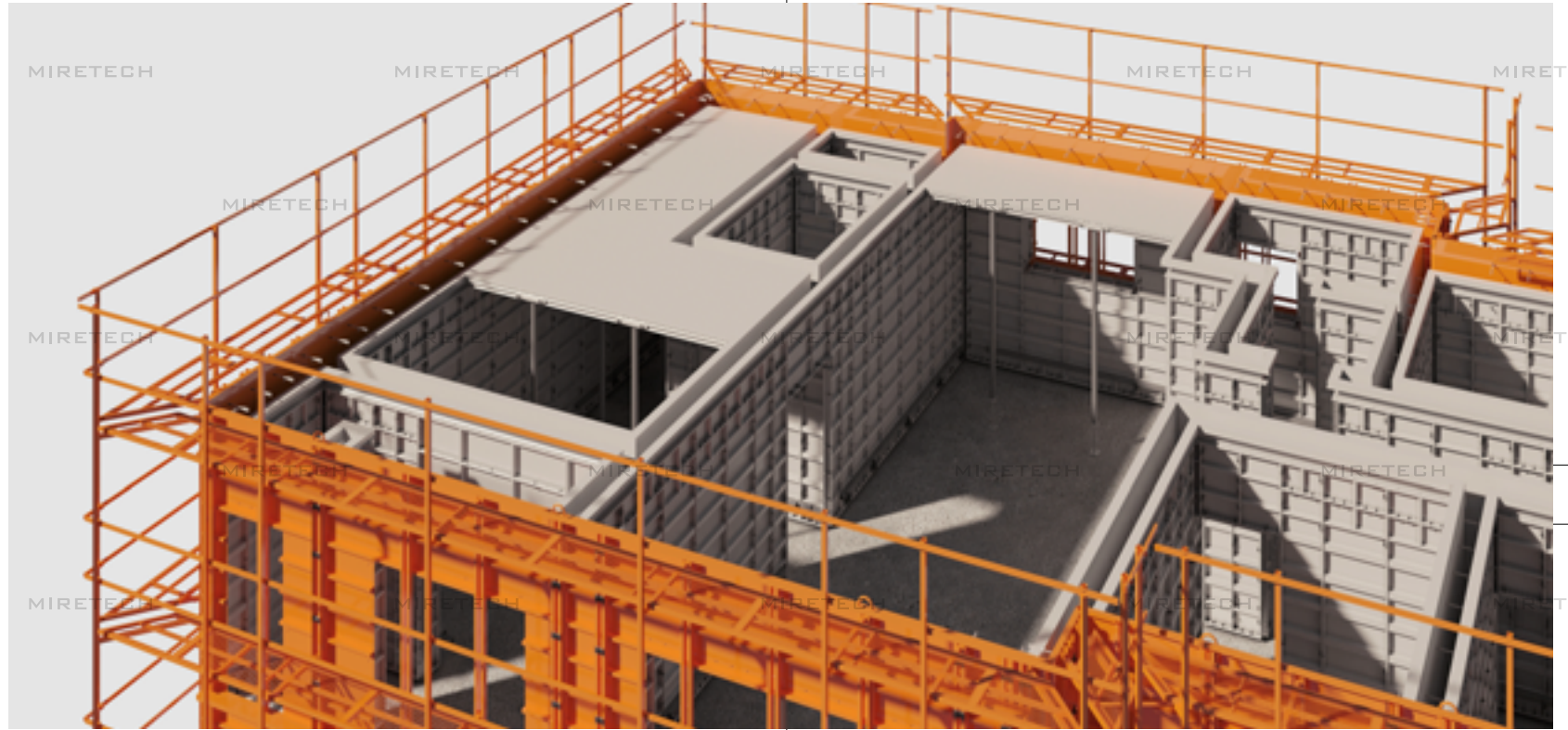
Aluforms Panel is the result of the synergy effect and focused technology from the collaboration between Miretech and Aluforms. It is a symbol of Miretech's ability to advance in the world.



## ALUFORMS PANEL







## MICO SL-TYPE

Mico SL-Type provides quality and reduction in construction time due to the short learning curve of assembly.

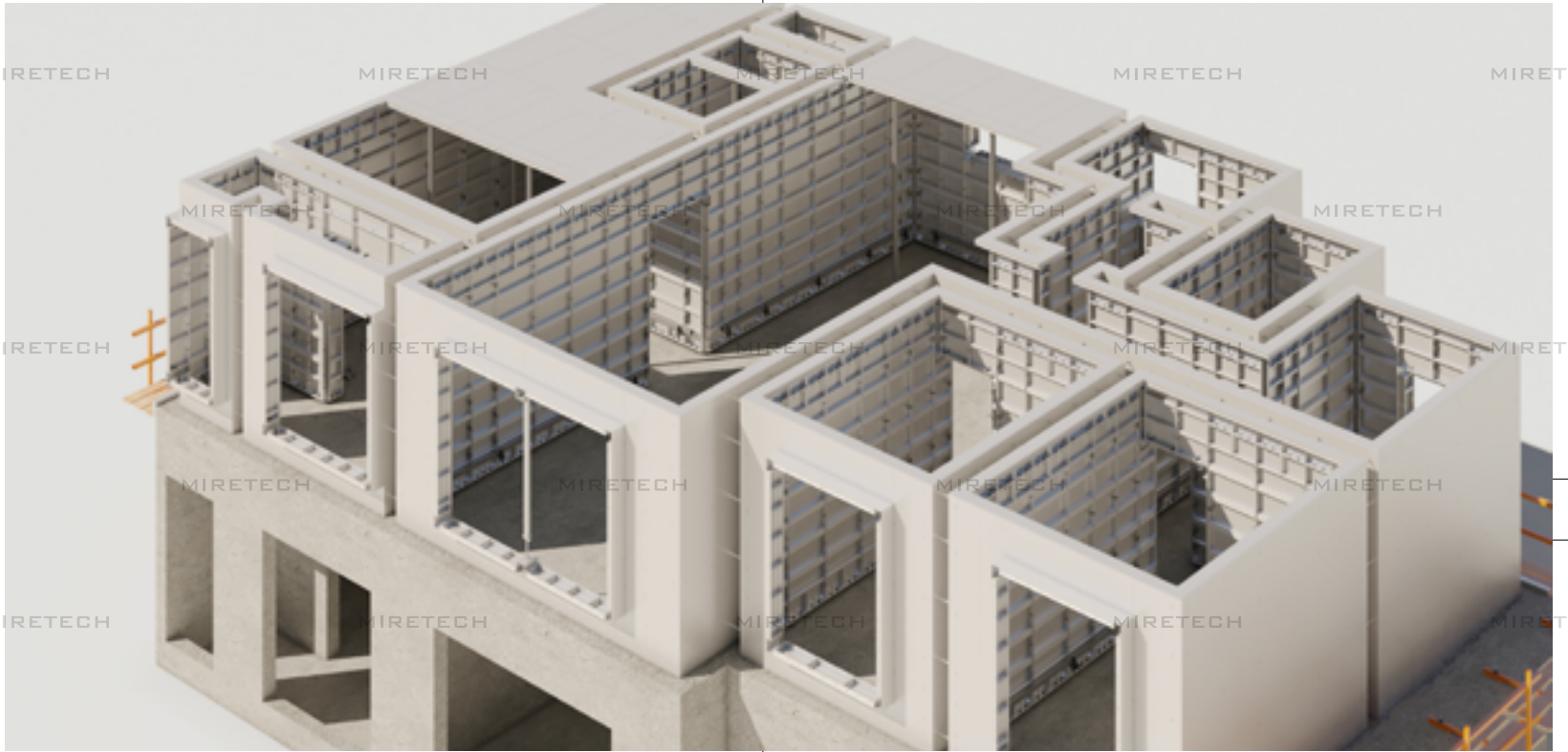
To maximize construction efficiency, we provide specialized design and construction supervision for easy assembly-installation-dismantling and repeated use.

In addition, Miretech's rapid A/S process is a continuous benefit at the customer's construction site.



All-in-one aluminium form that can set wall panel and slab panel through SL/SC is the most commonly used aluminium form system in apartments, commercial and office buildings.





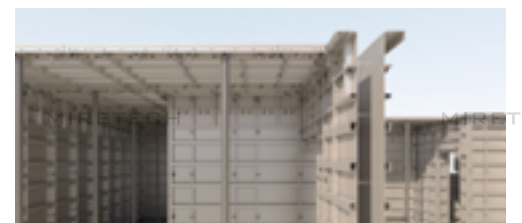
## MICO Non SL-TYPE

Non SL-Type Alform System is exclusively owned by Miretech in Korea. It is utilized in numerous buildings overseas and provides convenient installation and dismantling by using specialized accessories, such as knife bracket and form clip.

This system contains cell panel, and not the SL-Type prop head, which prevents sagging of slab and provides more support (suitable for plat-slab structure).



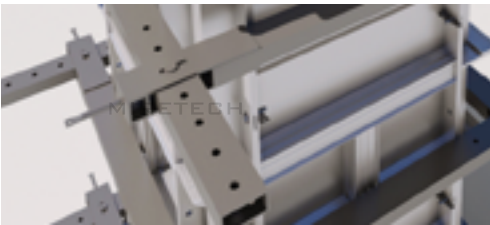
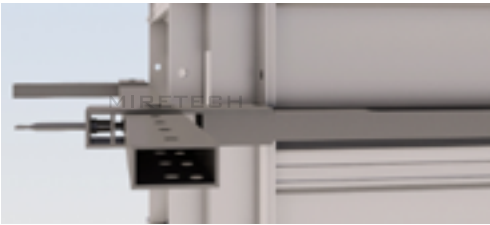
A separate and all-in-one aluminium form that can be set up with wall panel and slab panel using a knife ledger. It is an aluminium form system that is used in buildings or townhouses in which vertical materials (columns, walls) and horizontal materials (slab) are installed separately.





Miretech's Column Form Panel uses a completely different design approach from that of other companies.

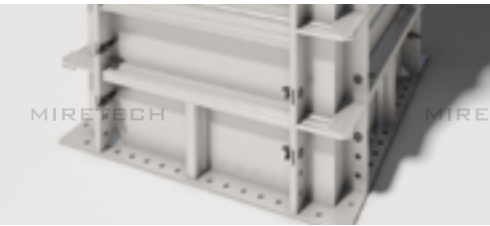
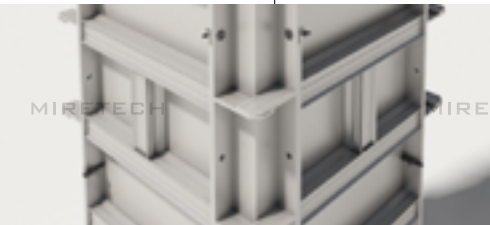
Box type reinforcing of the panel backside actively distributes the side pressure during concrete pouring to minimize panel deformation. In addition, to maintain the vertical angle and quality during concrete pouring, the 50X50, 100X100 out corner panels are manufactured to be thicker than other components in order to prevent damage during repeated use.



Handles were applied to the entire structure for smooth operations. And, when the panel is positioned vertically or horizontally, the panel's reinforcing band and side rails are designed to be the same height with the vertical and horizontal reinforcement pipes. The interval and dimension of all the holes of the panel are manufactured to be compatible with Euroform, the conventional panel.

Formwork developed for efficient construction of vertical columns when laying out the V/H separation of underground parking lots and Rahmen structures.

## MICO COLUMN



ALUMINIUM FORM



Mire Deck is designed to reduce construction cycle, reduce noise, and enhance construction efficiency at the construction site.

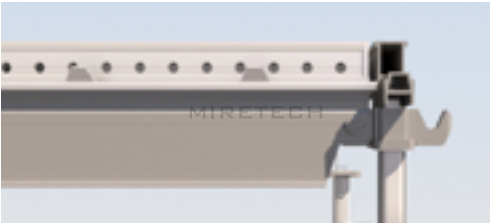
By adopting a drop-down approach, the noise produced during the dismantling of slab panels is minimized and the construction time is dramatically reduced by systematizing the repeated actions that are required for dismantling and re-installation.

The support interval of the supporting post is maximized by increasing the cross-sectional second moment of the main beam that supports the panel bottom. As a result, a large and desirable work space is secured.

In addition, all components are made from lightweight and high-strength aluminium alloy to minimize operator fatigue due to reuse.



Drop-down type slab formwork is a safe, fast, and efficient assembly-installation-dismantling process developed to construct flat slab and Rahmen structure slab.



## MIRE DECK





•

Efforts to replace conventional formwork in construction sites have continued from the past to the present.

The beam and slab, which are horizontal structures that are accompanied by the V/H separation during the construction of general structures, are still mostly constructed with wood formwork or Euroform.

Miretech's Table Form System is designed to maximize the construction efficiency of the basic panel of the aluminium form with minimum parts.



Miretech's formwork system has implemented a convenient system that is customized to operators by applying the know-how in the development of formwork specialized parts, such as form tie system, used in the construction site.

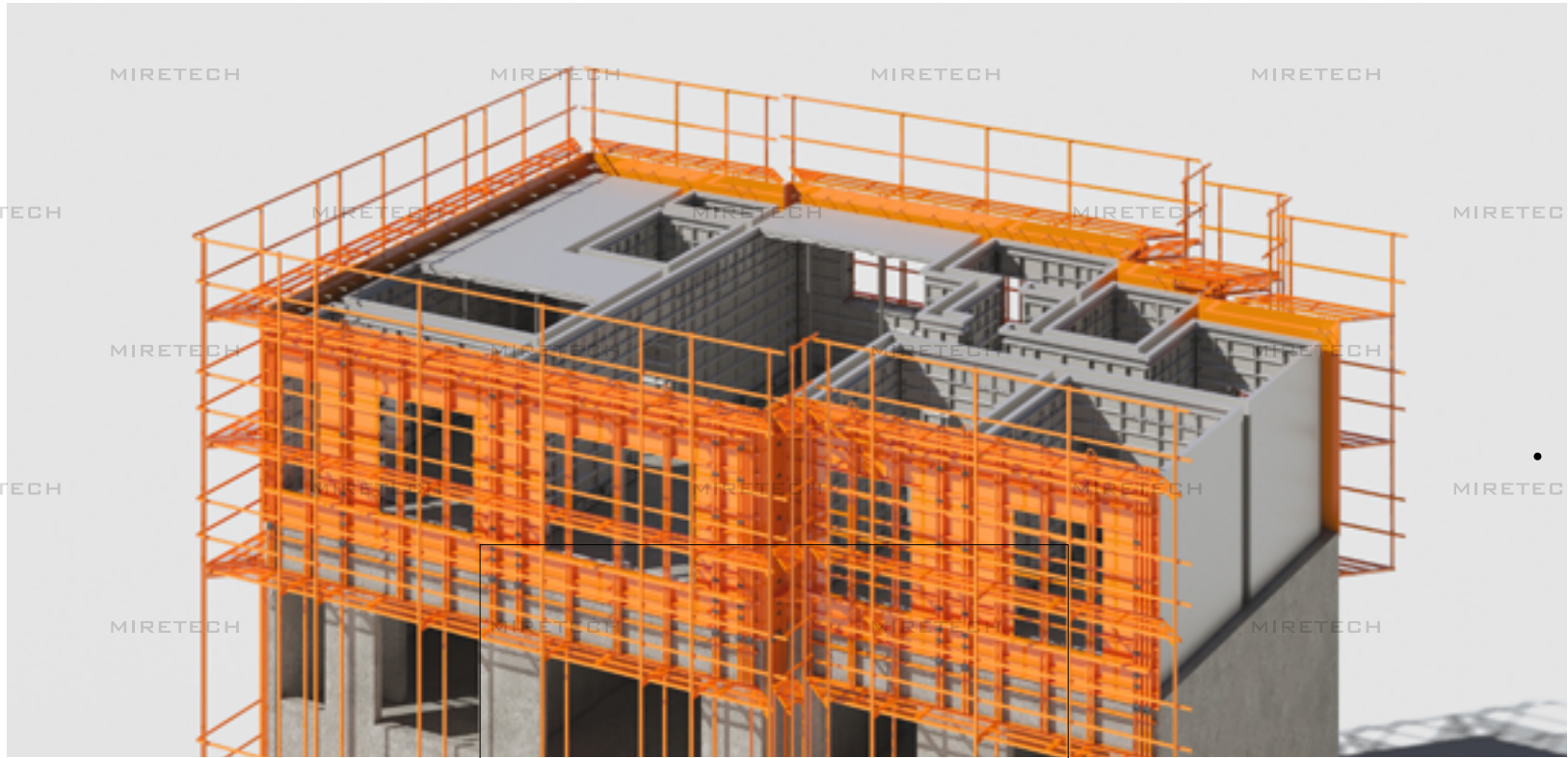


## MIRE TABLE (Beam & SLAB)



The joints between the aluminium table and conventional formwork are designed to be set with minimal material, and the MIRE Prop supports the underside of the table with excellent rigidity for safe construction.





## GANG FORM

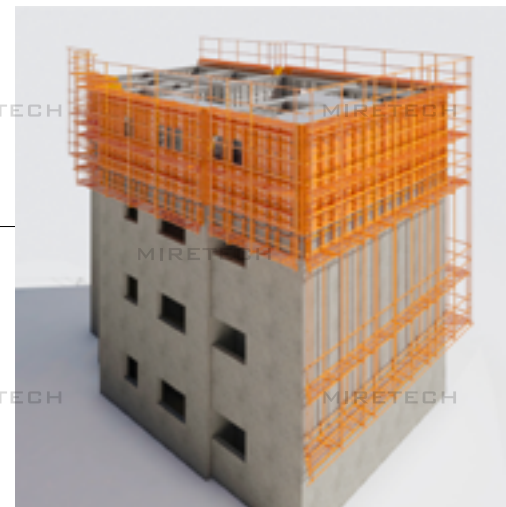
Steel formwork, all-in-one cage, and platform can be processed in parallel with form setting and plastering. This improves the quality of the concrete surface, reduce construction time and labor cost.



ABOUT PRODUCTS 20—21

As apartment buildings have become high-rises and standardized, the use of steel gang form, which are essential for the construction of exterior walls of high-rise apartments, has increased.

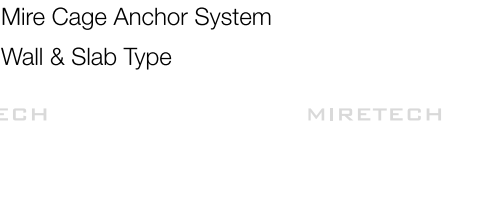
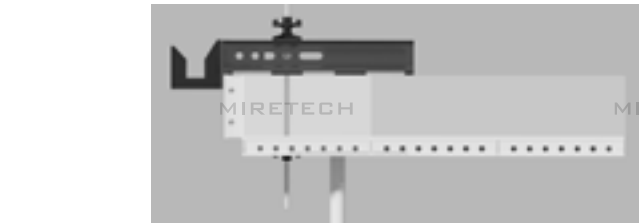
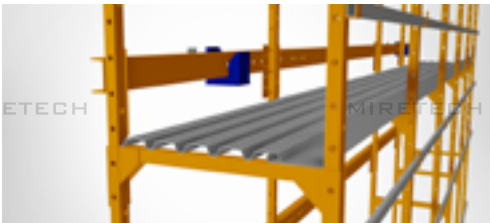
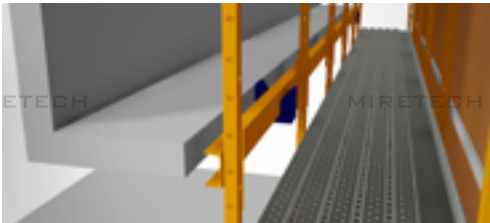
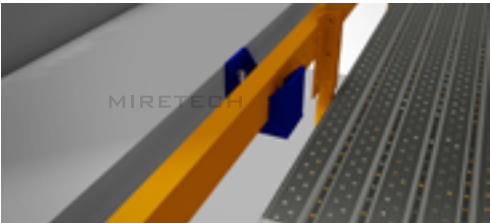
Accordingly, Miretech strives to secure quality steel materials and assembly quality, such as welding, to ensure safe and economical gang forms.





Safety is always a top priority at the construction site. Mire Cage System keeps the operator safe and enables accurate formwork when constructing exterior walls without the use of gang form.

Miretech's specialized anchoring system, which supports Cage, and Shoe, which can be applied to various building types, enables a safe working environment. It also enables the safe exterior wall construction of Rahmen structure, flat slab structure, and structures with unique external appearances.



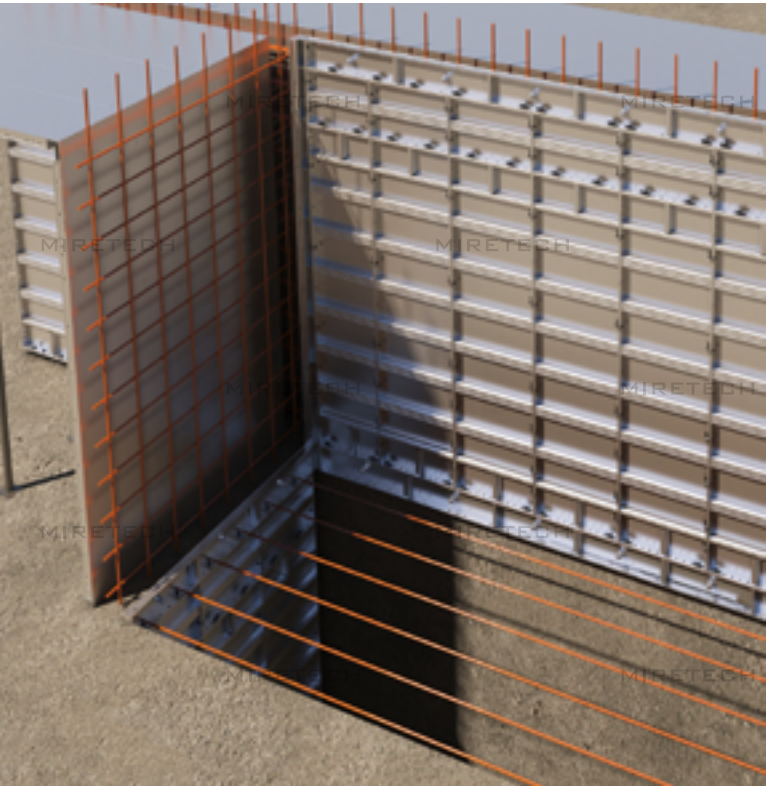
## MIRE CAGE

SAFETY PLATFORM

Mire Cage Anchor System  
Wall & Slab Type



Only two-floor supply of Miretech's Kicker Anchor is needed, which dramatically reduce material cost. In addition, the bolts and nuts that make up the Anchor are combined and can be used without separating them. It is designed for construction efficiency.

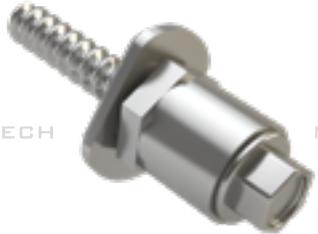
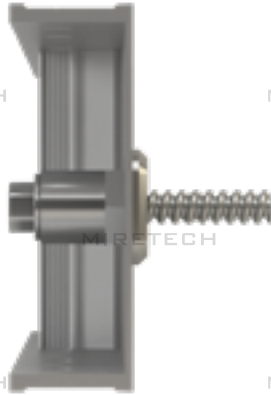
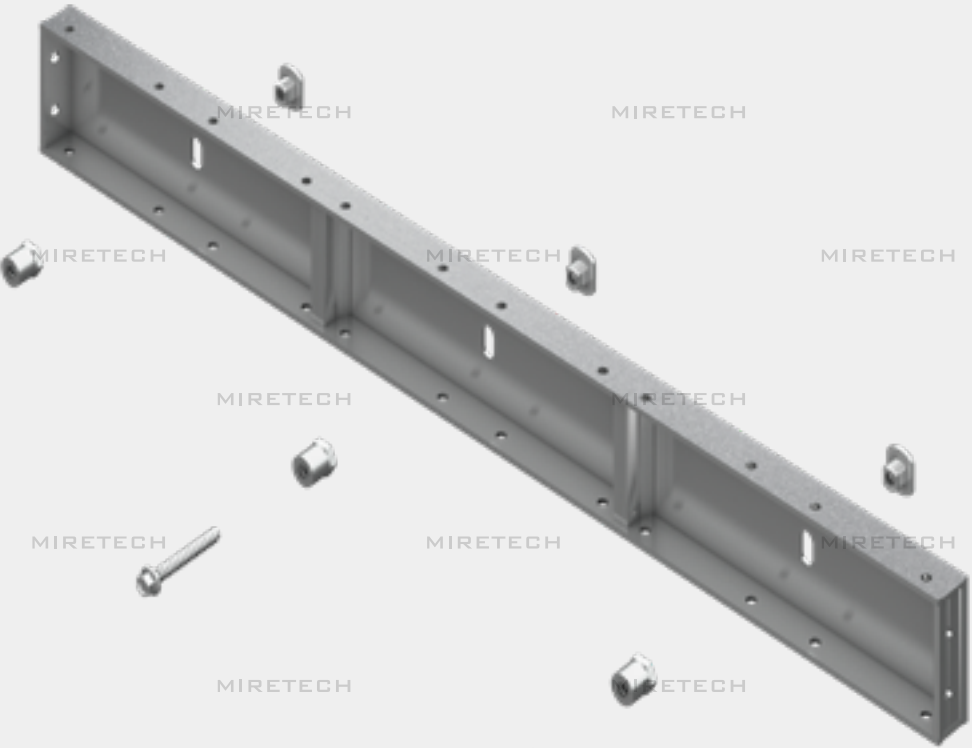


ABOUT PRODUCTS 24—25

# MICO KICKER ANCHOR SYSTEM

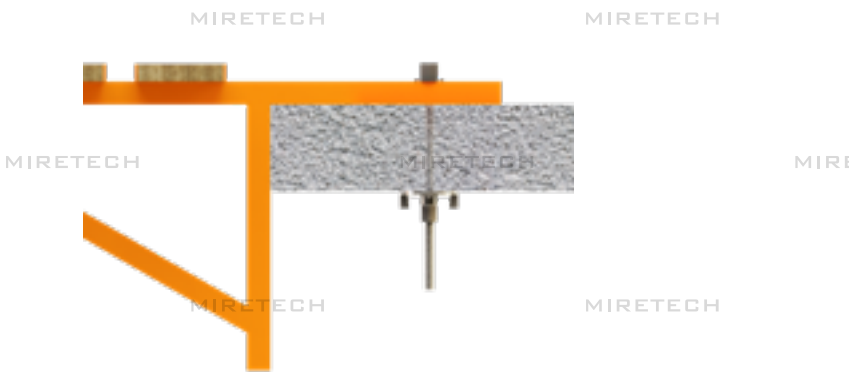
The Mico Kicker Anchor System is used to connect the lower and upper panels when using alform on the exterior of a building or interior of an elevator. And, the kicker panel and kicker anchor is used to support the upper panel's weight and the upper floor's work load.

The amount of traditional kicker anchors used is based on the number of floors and they are buried in each floor, which causes material cost to increase and construction efficiency to decrease.



SAFETY PLATFORM





When using external formwork, instead of scaffolding, for low-rise townhouse and residential building allows for safe form operations.

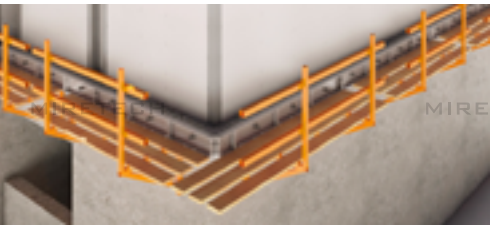
It is a safety platform constructed with minimum materials to ensure safe operations. The bracket is secured using a penetration anchor and a wooden or perforated tread platform is installed. The dismantled formwork (alform and Euroform) is moved from the lower floor to the upper floor.

There are two types, wall and slab.

ABOUT PRODUCTS 26—27



## WORKING PLATFORM



SAFETY PLATFORM



## Form Tie System

ONE-TOUCH & INNO FORM TIE SYSTEM\_  
Form Tie System connects the external Gang  
Form and internal Aluminium Form

EASY FORM TIE SYSTEM\_  
Gang Form and Gang Form connecting Form  
Tie System

DIWIDAG FORM TIE SYSTEM\_  
Possibility to reduce Tie quantity and  
construction time by using high tension Tie

## MIRE FORM TIE SYSTEM\_

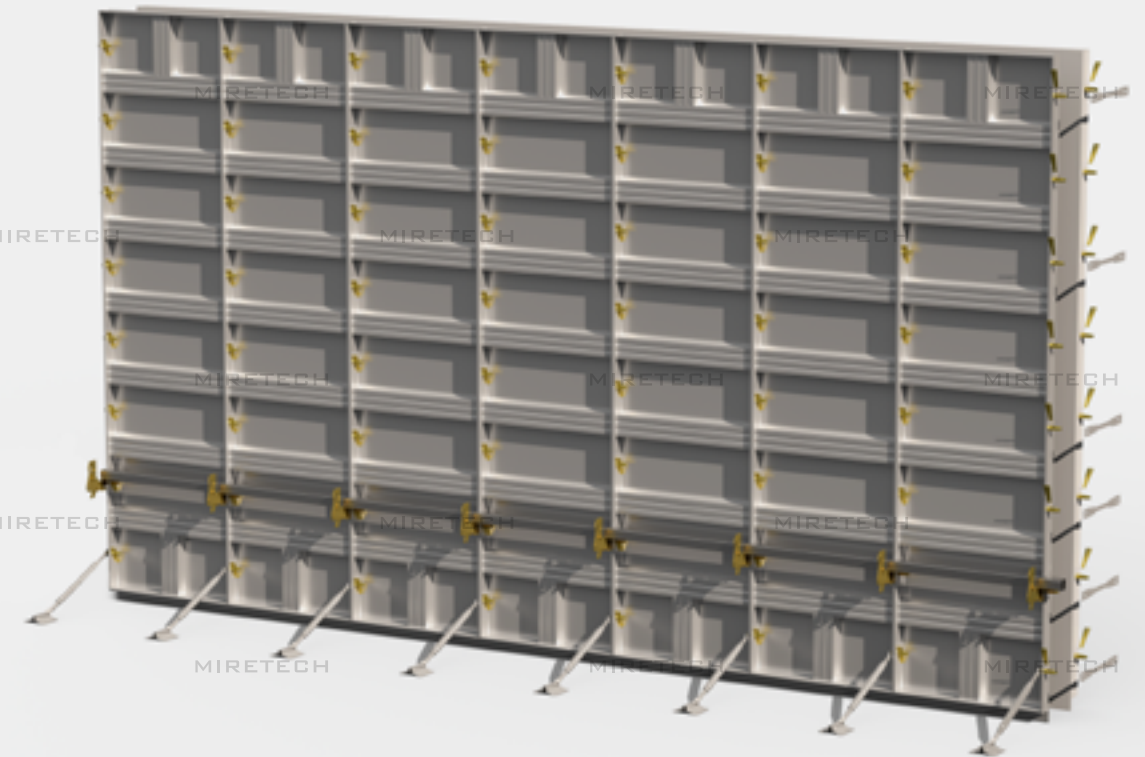
Various Ties and Embedded anchor types and  
the connecting details



Embedded anchor used to fix Gang Form to the outer wall and accessories to maintain verticality



Form Ties and Pins used to connect the exterior and interior wall of the Aluminium Form and accessories to maintain wall verticality.









•

•

•

•

•

•

•

•

•

•

•